

2 Bedroom Loft Type

Floor Area approx. 75.5 sqm

Lot Area approx. 78.0 sqm

UNIT DIMENSIONS

Ground Floor Plan

Living & Dining Area	12.30 sqm
Kitchen Area	7.20 sqm
Toilet & Bath 1	4.25 sqm
Bedroom 1	10.35 sqm

TOTAL **34.10 sqm**

2nd Floor Plan

Mezzanine	20.20 sqm
-----------	-----------



Ground Floor Plan



2nd Floor Plan

CELINE

3 Bedroom Townhouse

Floor Area approx. 88.5 sqm

Lot Area approx. 96.0 sqm

UNIT DIMENSIONS

Ground Floor Plan

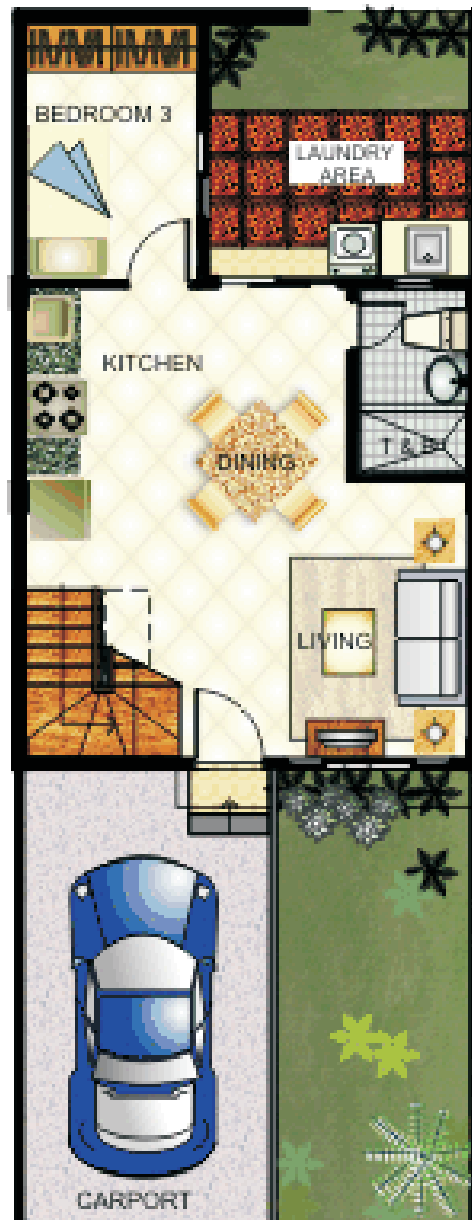
Living & Dining Area	22.75 sqm
Kitchen Area	11.60 sqm
Toilet & Bath 2	4.50 sqm
Bedroom 3	8.75 sqm

TOTAL 47.60 sqm

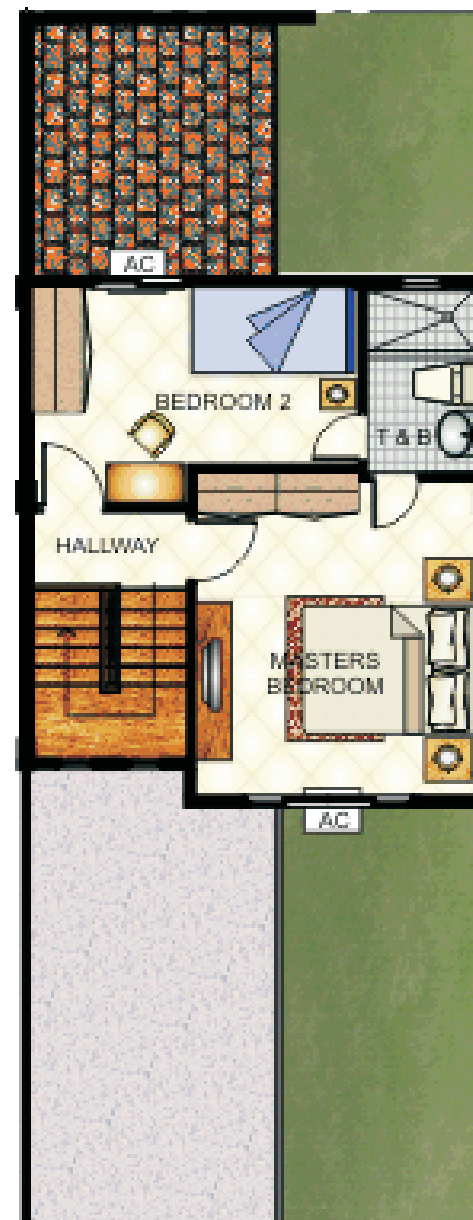
2nd Floor Plan

Masters bedroom	16.50 sqm
Bedroom 2	12.50 sqm
Toilet & Bath 1	4.50 sqm
Hallway & Storage	7.40 sqm

TOTAL 40.90 sqm



Ground Floor Plan



2nd Floor Plan

AUBREY

3 Bedroom Duplex

Floor Area approx. 117 sqm

Lot Area approx. 112 sqm

UNIT DIMENSIONS

Ground Floor Plan

Living & Dining Area	20.36 sqm
Kitchen Area	5.74 sqm
Toilet & Bath 1	3.53 sqm
Bedroom 3	5.87 sqm
Carport	16.83 sqm
Stairway	2.56 sqm
Storage	2.56 sqm

TOTAL 57.44 sqm

2nd Floor Plan

Masters bedroom	17.21 sqm
Bedroom 2	10.61 sqm
Toilet & Bath 2	4.55 sqm
Hallway	3.05 sqm
Stair part	5.22 sqm

TOTAL 40.62 sqm

Porch 1.50 sqm

Balcony 16.83 sqm



Ground Floor Plan



2nd Floor Plan

BERNICE

3 Bedroom Duplex

Floor Area approx. 115 sqm

Lot Area approx. 112 sqm

UNIT DIMENSIONS

Ground Floor Plan

Living & Dining Area	20.36 sqm
Kitchen Area	5.74 sqm
Toilet & Bath 1	3.53 sqm
Bedroom 3	5.87 sqm
Carport	16.83 sqm
Stairway	2.56 sqm
Storage	2.56 sqm

TOTAL 57.44 sqm

2nd Floor Plan

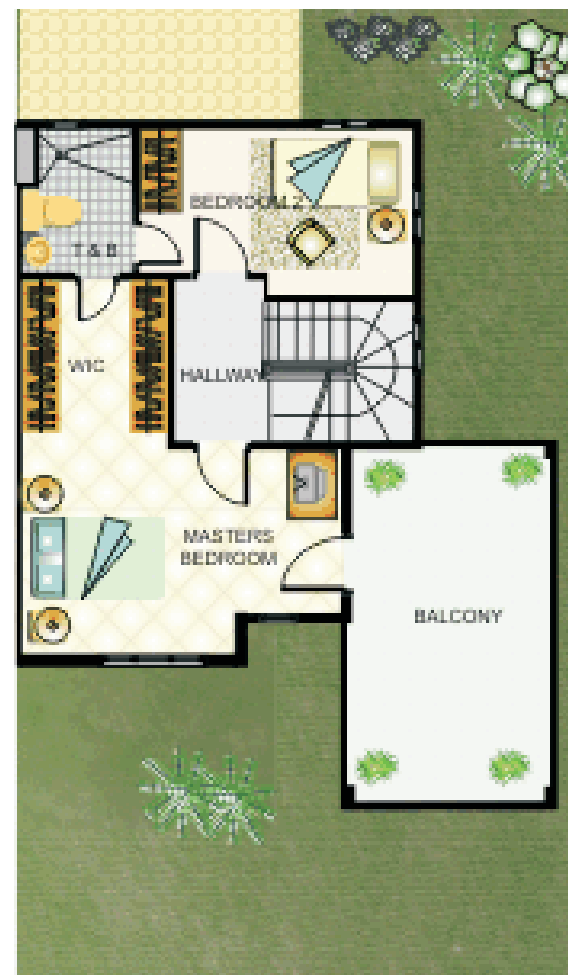
Masters bedroom	19.31 sqm
Bedroom 2	10.61 sqm
Toilet & Bath 2	4.55 sqm
Hallway	3.05 sqm
Stair part	5.22 sqm

TOTAL 42.72 sqm

Porch	1.50 sqm
Balcony	13.97 sqm



Ground Floor Plan



2nd Floor Plan

VICTORIA

4 Bedroom Single Detached

Floor Area approx. 133 sqm

Lot Area approx. 112 sqm

UNIT DIMENSIONS

Ground Floor Plan

Living & Dining Area	26.50 sqm
Kitchen Area	8.75 sqm
Toilet & Bath 3	2.60 sqm
Bedroom 4	6.75 sqm
Carport	16.00 sqm
Stairway Storage	4.50 sqm

TOTAL 65.00 sqm

2nd Floor Plan

Masters bedroom	19.50 sqm
Bedroom 2	7.65 sqm
Bedroom 3	7.50 sqm
Toilet & Bath 1	3.50 sqm
Toilet & Bath 2	3.50 sqm
Stairway & Hallway	9.35 sqm
Balcony	17.00 sqm

TOTAL 68.00 sqm



Ground Floor Plan



2nd Floor Plan